

FEVER DETECTED



Temperature scanning with Amulet Solutions...

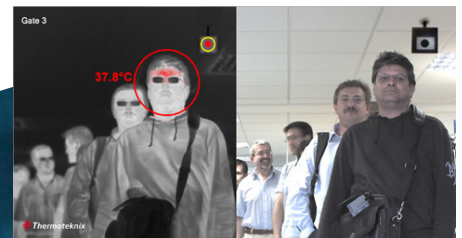
The worldwide spread of the Coronavirus has left companies looking for ways to keep their employees, visitors and suppliers safe as they prepare to continue with their normal business operations.

Amulet understand that different business requirements demand different solutions. Working with leading global technology companies we offer the most relevant options for each specific situation.

Multiple simultaneous scanning for busy environments

For areas with a large volume of people to scan such as in airports, train stations, ports, event spaces, factories, larger offices and shopping malls we need a system that can both handle this increase in numbers and provide accurate readings.

Amulet offer one of the UK's leading systems in this field with the ability to scan multiple moving targets (up to 40 people) without close human contact and at a distance of up to 15m range from the sensor. The system is suitable to scan mass pedestrian areas and uses a temperature calibration device that improves accuracy to $\pm 0.2^{\circ}\text{C}$.

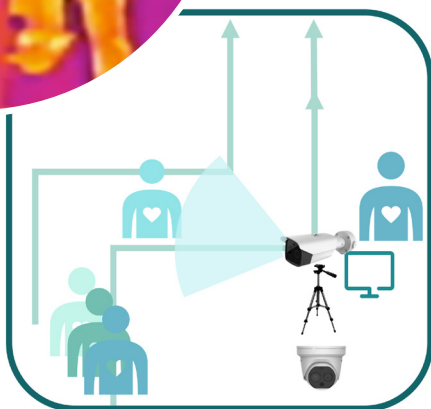
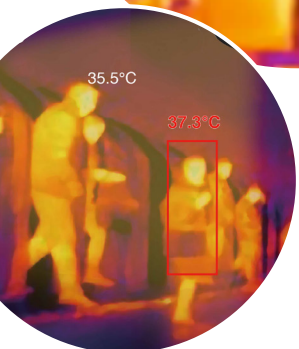
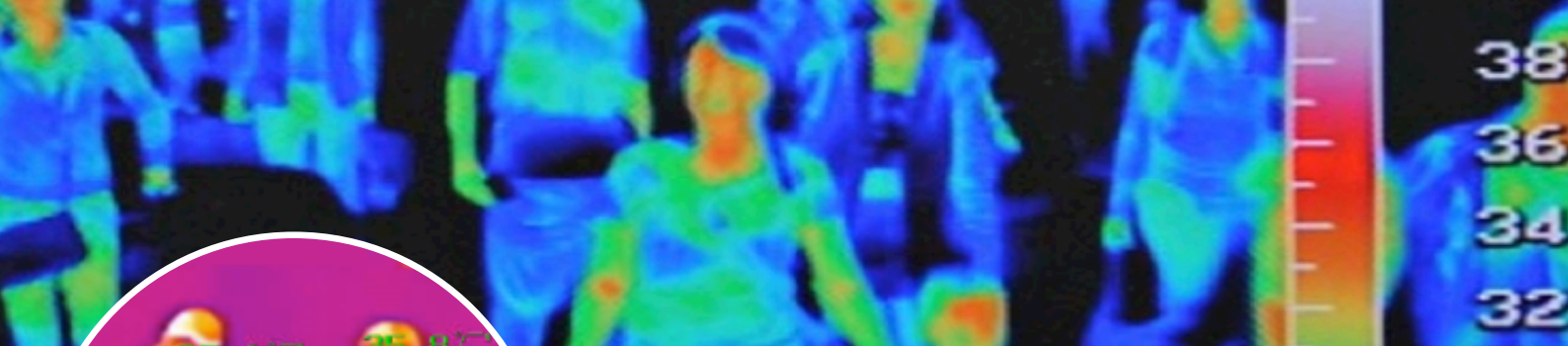


For more information please contact us at our Command Control and Intelligence Centre

0844 2252121

John Naughton, Solutions Director
Email: John.Naughton@amulet.co.uk


amulet
security. transformed.



Multiple scanning at peak times

Where there is a need to manage larger groups of people entering a building, such as at college or even peak office opening times, the equipment required needs to be able to monitor the entire group simultaneously as well as been clear in identifying anyone whose temperature is raised.

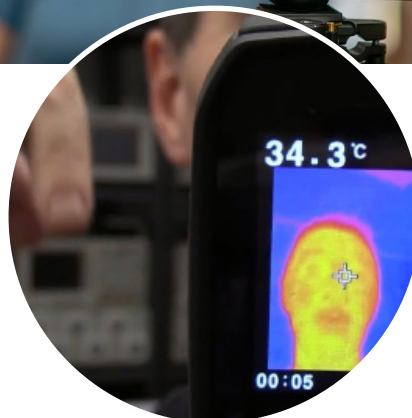
Here we recommend a thermal camera that can be tripod mounted or permanently fixed at the entrance points. This option allows us to measure up to twenty people at a time as they proceed to enter site. Raised temperatures will raise an audible alarm and indicate the person displaying a raised temperature.

Ideal measure for a steady flow

Handheld or tripod mounted thermal camera a suitable way to measure a steady flow of people through an entrance point to a building. Readings can be taken one by one.

An option for use at reception or Concierge. With a degree of accuracy to 0.5 degrees, this Imaging IR Thermometer is suitable for use in detecting if a person has a higher than average temperature. The camera can be set up away from the measurement point, ensuring that the user remains safely isolated from the person being scanned.

With all of the above options It is recommended that those displaying a higher than average temperature be directed to a suitable area to have a further confirmatory temperature check.



For more information please contact us at our Command Control and Intelligence Centre

0844 2252121

John Naughton, Solutions Director
Email: John.Naughton@amulet.co.uk